



Dairy Herd Health and Production Management Software



Developed in collaboration
with



Contact Details:

Quality Milk Management Services Ltd
Cedar Barn
Easton
Nr Wells
Somerset
BA5 1DU

Tel: 01749 871 171

email: totalvet@qmms.co.uk

Website: www.total-vet.co.uk

What is **TOTALVET**

TOTALVET is an innovative program aimed at the progressive cattle vet. The software has been developed by the unprecedented combination of RCVS Recognised Specialist cattle vets working in collaboration with expert programmers with an in-depth knowledge of the dairy industry.

The software is compatible with a variety of computer programs and data formats, compiling information in a common format which can then be further manipulated for the purposes of evaluation of herd health and productivity. Once created, a dataset can be validated by reconciliation with the British Cattle Movement Service (BCMS) and enhanced by the quick and easy integration of additional management information such as milk records or individual cow events using a batch import facility.

TOTALVET offers the unrivalled combination of reliable and repeatable data analysis integrated with a reporting system, minimising the time used in collation and formatting of reports. The software can operate either as a stand-alone module or as part of a networked environment with full synchronisation of all datasets between both networked and 'roaming' off site laptops.

TOTALVET is an analysis and reporting software package designed to run alongside existing on-farm data capture software or to be used as a tool to evaluate milk recording data downloaded from central databases.

TOTALVET is compatible with a wide range of on-farm software as well as data from Milk Recording Organisations via a CDL file. Additional health event data can be merged in via a .csv file template.

TOTALVET offers is compatible with windows, apple and linux operating systems. The software is easy to navigate providing quick and easy access to tools to improve / validate the data, individual cow records and pedigrees as well as tightly specified health / production analyses.

About Us

Quality Milk Management Services was founded in 2005 by Dr Andrew Bradley, a RCVS Recognised Specialist in Cattle Health and Production. QMMS offers services to all aspects of the dairy industry, both in the UK and overseas, from vets and farmers to the pharmaceutical industry. Services offered include milk recording, bacteriology and bulk tank analyses, backed by evidence-based advice from a strong research background.

TOTALVET Home Screen

The **TOTALVET** front screen provides immediate access to key data as illustrated below:

Farm details, data source, dates of last milk recording and actions

Key herd reminders eg. animals due for PD, service or unexpected events etc.

Default report parameters (can be customised in configuration) eg. voluntary wait period =

The screenshot shows the TOTALVET Home Screen interface. On the left is a sidebar menu with icons for Home, Animal Record, Animal Search, Herd Reminders, Events Diary, Advanced Reports, User Reports, and Configuration. The main area is divided into several sections:

- Client Database Status:** Client: Demo1A, Source: TV3, Last Recording: 01/09/2021, Name: Fred Arnold, Size: 40.0 MB, Farm: New Beech Farm, Merged Files: 0.
- Reminders Table:**

Date	Type	Done	Description
01/09/2021	System		19 animals not seen bulling
01/09/2021	System		24 animals not served
01/09/2021	System		13 animals due to return
01/09/2021	System		5 animals due for PD
01/09/2021	System		4 animals assumed PD+
01/09/2021	System		14 animals due to be dried off within two weeks
01/09/2021	System		2 animals not in calf after at least 200 days in milk
- Important Parameters Table:**

Parameter	Value
General Handling	
Milk Price	0.24 £ / litre
Percent For Valid Recording	25 %
Fertility	
Assume PD+ After	50 days
Service To PD	35 days
Target First Calving Age	730 days
Voluntary Waiting Period	42 days
Udder Health	
SCC Early Threshold	400
SCC Main Threshold	200
- Summary Charts:** A grid of charts showing herd performance metrics:
 - Herd Profile:** 208 (L4+ = 16), 192 (L3 = 23), 169 (L2 = 22), 147 (L1 = 47), 100 (Heifer > 1y = 35), 65 (Heifer <= 1y = 36)
 - Fertility:** Days to First Serve (60.0), 100 Day In-Calf Rate (42.3)
 - Mastitis (Clinical):** CM Incidence Rate (26.1), Apparent Dry Rate (1.09), Apparent Lact. Rate (2.25)
 - Mastitis (SCC):** High SCC (8.9)
 - Health:** Lameness Rate (7.2), Condition Score Change (-0.2)
 - Production:** 305 Day Yield (10336, 10314, 10349, 10349, 10469)

Toolbar to access animal record, events and treatments and 'Advanced Reports' for in depth analysis

Summary of herd size and performance in fertility, health and production.

Customisable Interface

Re-arrange the home screen to suit your needs

The screenshot shows the TOTALVET interface with a customisation menu overlaid on the Summary Charts section. The menu allows users to select which charts to display:

- Herd Profile
- Adult Herd Profile
- Lactation Profile
- Serves to Conception
- 100 Day In-Calf Rate
- 300 Day Empty Rate
- Days to First Serve
- First Serve Submission
- Fertility Efficiency
- CM Incidence Rate
- Apparent Dry Rate
- Apparent Lact. Rate
- High SCC
- Lact. New Infection
- Fresh Calver Infection
- Lameness Rate
- Yield Cow Day
- 305 Day Yield
- Condition Score Change

The background shows the Summary Charts section with the following data:

Chart	Value 1	Value 2
Days to First Serve	60.0	42.3
100 Day In-Calf Rate	26.1	1.09
Apparent Dry Rate	2.25	8.9
High SCC	7.2	-0.2
Lameness Rate	10336	10314
Condition Score Change	10349	10349
305 Day Yield	10469	

Choose your summary charts

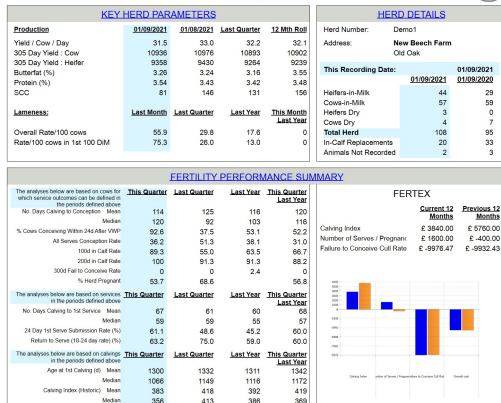
TOTALVET - Reporting

The **TOTALVET** package offers access to more than 100 specialist reports including **Fertility, Nutrition & Production, Lameness, Udder Health, Johne's and Genetics**. These tightly specified reports ensure repeatable and reliable analyses, irrespective of the data source.

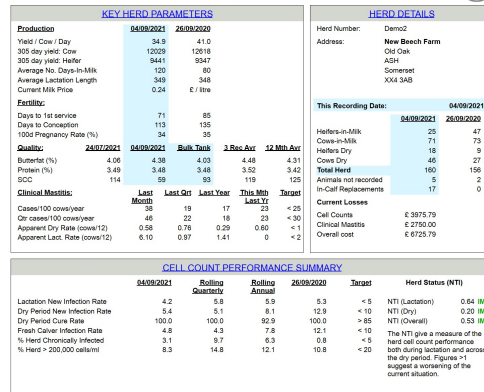
All reports allow the concurrent compilation of notes for reporting purposes. Examples of some of the reports are outlined below:

Summary Reports: Summary reports cover key aspects of management and performance:

New Beech Farm - Fred Arnold
Herd Fertility Summary - Fertility Summary Report

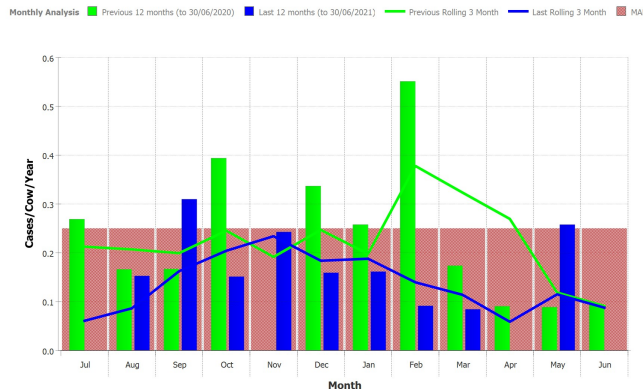


New Beech Farm - Fred Arnold
Herd Mastitis Summary - Summary Report

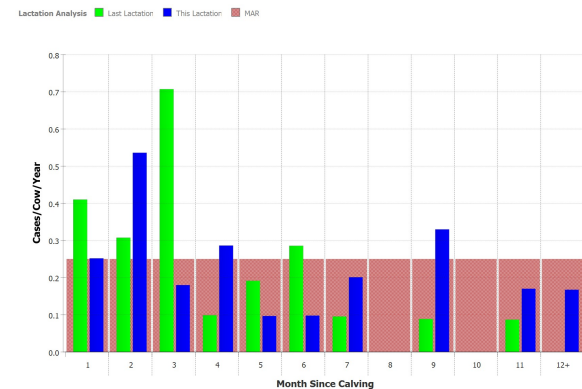


Powerful Event Analysis Reports: Easy to use, familiar, event analyses with the ability to manage multiple analysis groups.

Analysis by Month



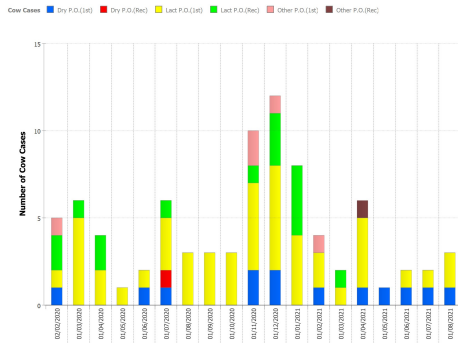
Analysis by Stage of Lactation



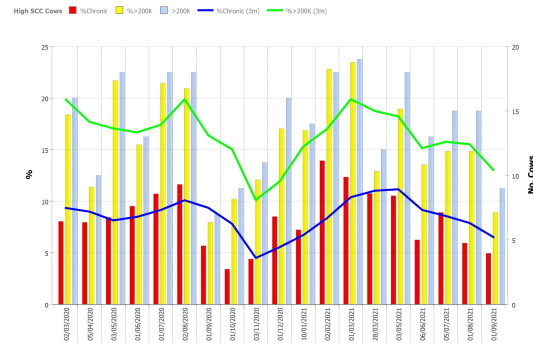
New TOTALVET, familiar reports

Mastitis Analysis Reports: Mastitis reports allow an unprecedented insight into mastitis and milk quality on farm, with analysis of both somatic cell count and clinical mastitis data.

Cow cases by apparent origin

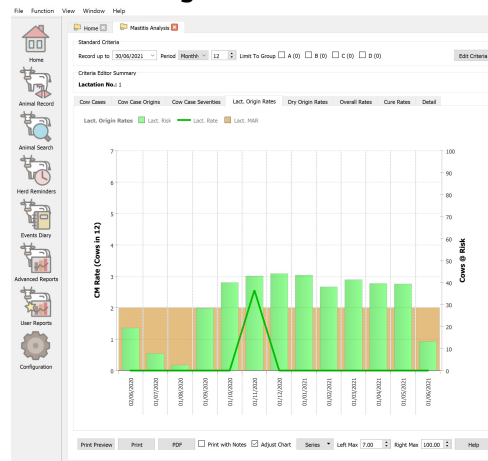


Proportion of high and chronic high SCC

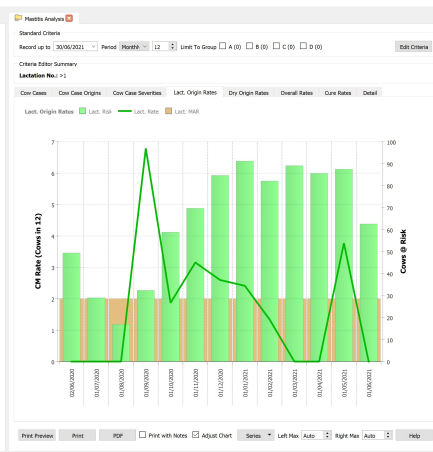


NEW Split Screen function allows side-by-side comparison

Lactation Origin Rate in Heifers...

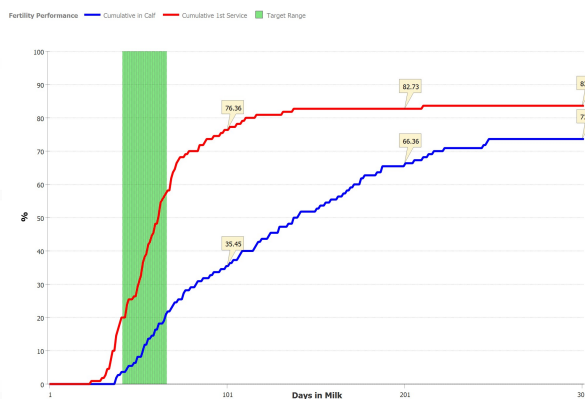


...and in Cows

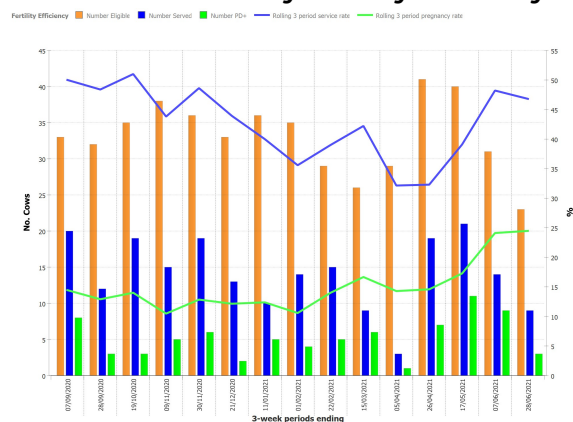


Conventional and Innovative Fertility Reporting: Robust reporting of fertility data uses both traditional and more novel approaches to data analysis.

In calf and Service Curves



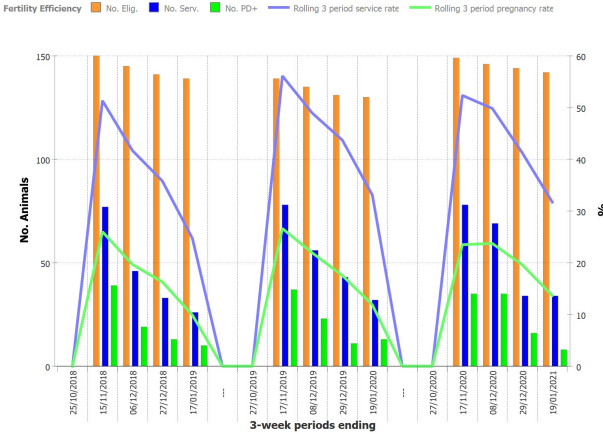
Assessment of 21-day Fertility Efficiency



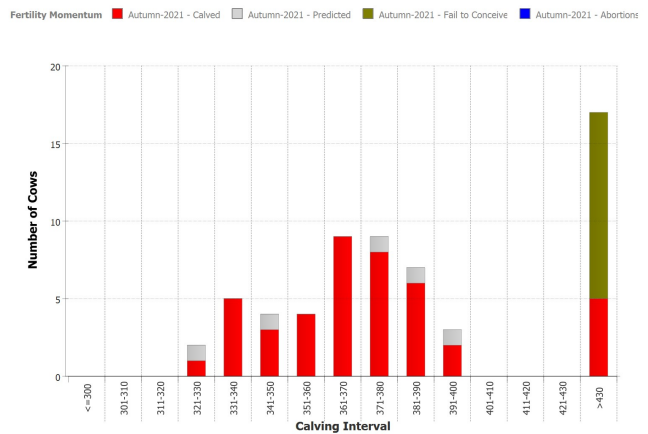
NEW and IMPROVED reports

Seasonal Calving Report: A new series of charts allowing analysis of fertility in block calving herds – unlike any other software on the market!

Fertility Efficiency

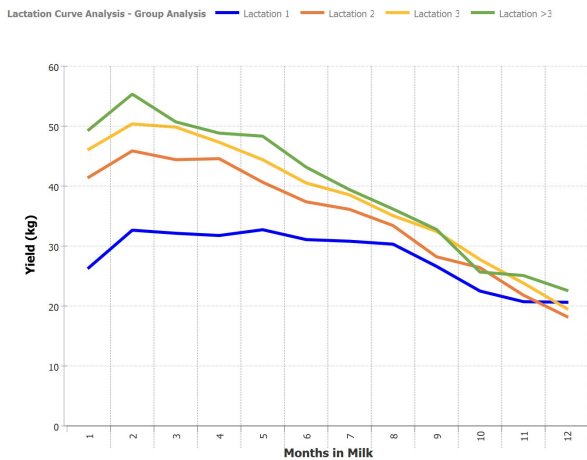


Calving Interval and Failure to Conceive



Nutrition and Production: New approaches to monitoring performance throughout the lactation cycle.

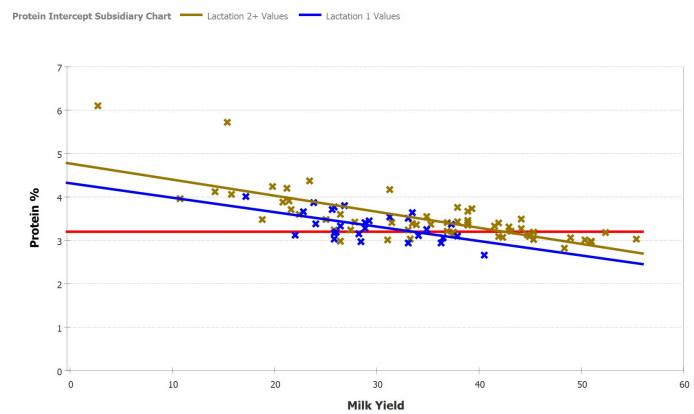
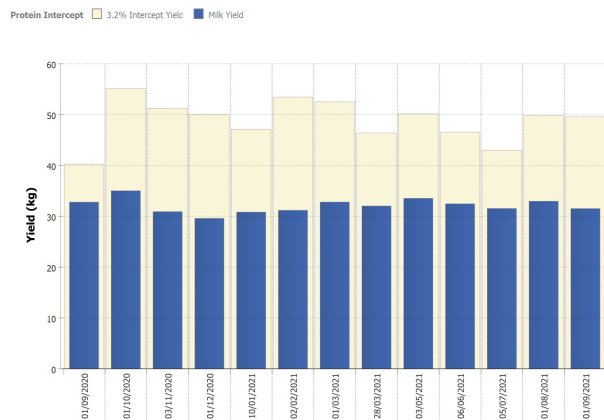
Milk Production by Lactation No.



Body Condition Score by Days In Milk



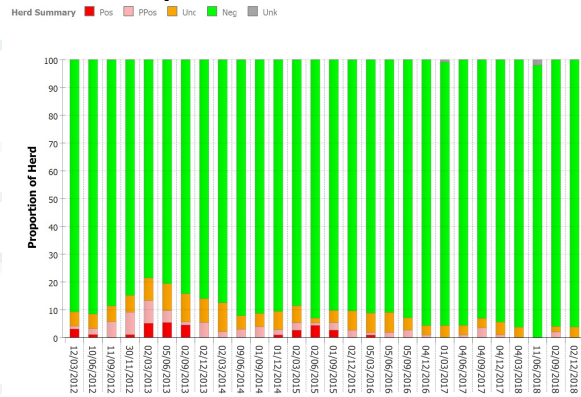
Estimated 'Protein Intercept'



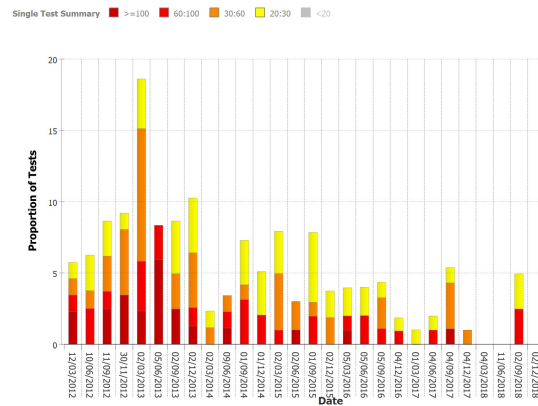
NEW and IMPROVED reports

Johne's Disease: Analysis of Johne's test result, for QMMS milk recording herds or data merged in via a .csv file. Facilitates analysis in line with Action Johne's.

Proportion of the Herd Infected

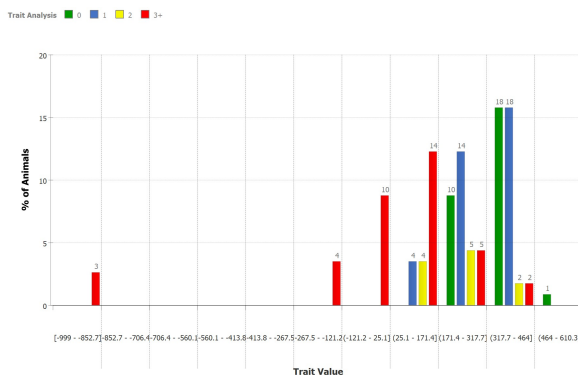


Summary of 'Single-Test' Results

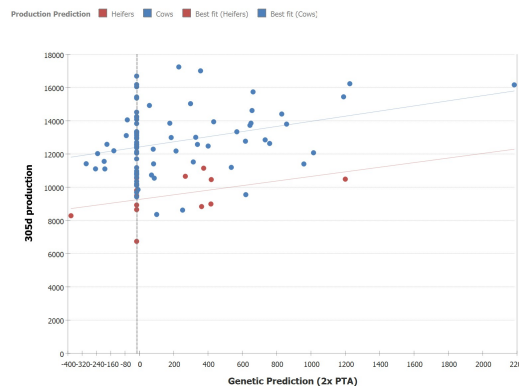


Genetic Data: Analysis of genetic data taken from the AHDB Herd Genetic Report or genomic test results.

Analysis of PLI by parity

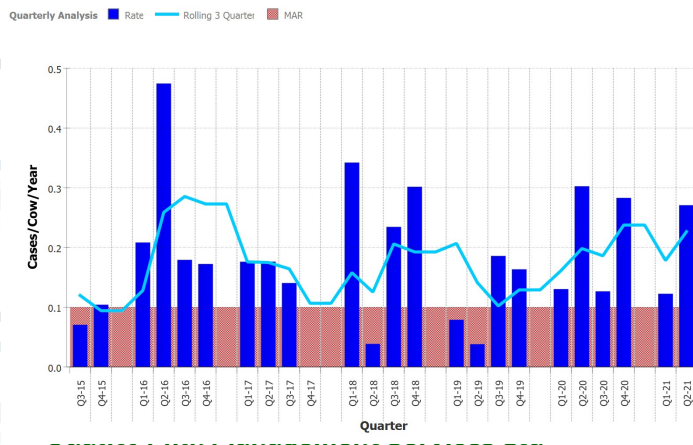


305 yield against Milk PTA

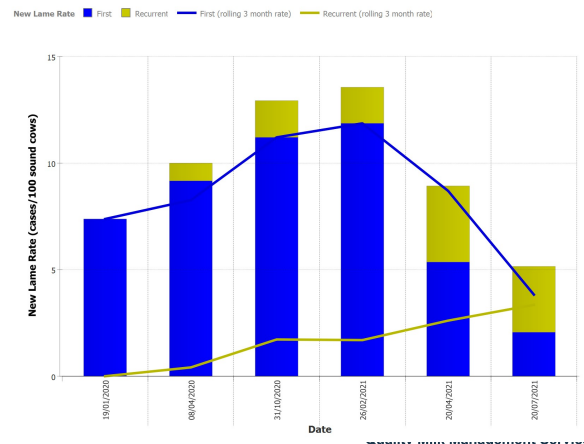


Lameness: Assess lameness patterns using clinical cases and mobility score data.

Quarterly Lameness Incidence

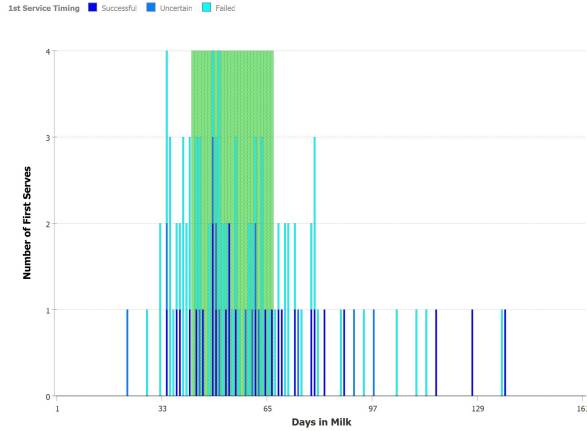


New Lame Rate (First and Recurrent)



Analyse Service and Treatment Events

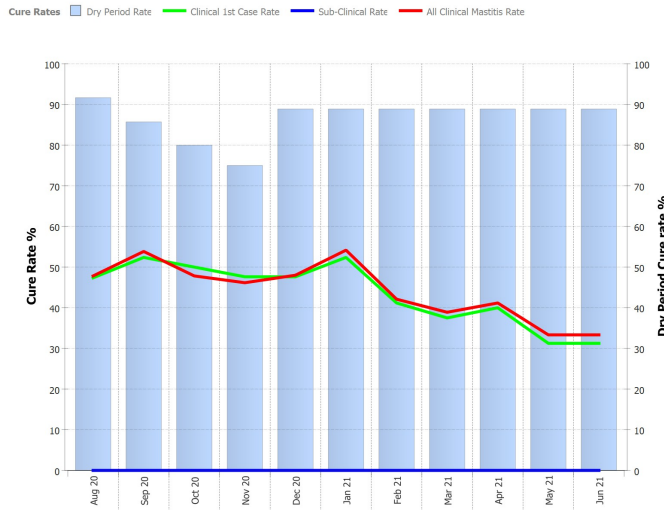
1st Service Timing



Conception Rate by Lactation No.



Clinical Mastitis and Dry Period Cure Rate

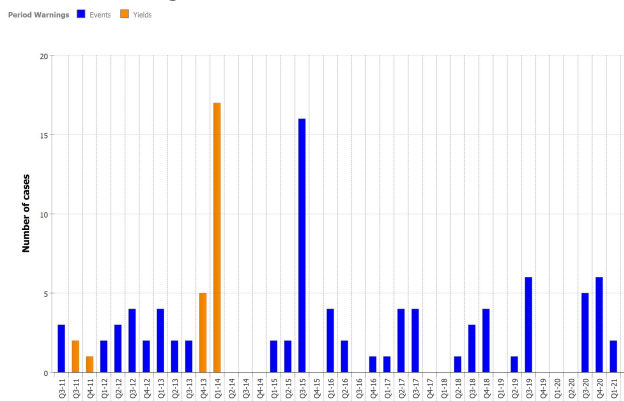


Clinical Mastitis 'CuSum'



Assess Data Quality

1. Missed service, PD, calving events
2. Inappropriate serves or gestation lengths
3. Missing yields or milk recording data



Generate Management Lists

TOTALVET can identify 'problem cows' with poor **Fertility, Udder Health** or **Lameness**. Lists can be viewed on the software or printed as a pdf report.

- 1. Vets Action List:** List of cows for PD, recheck, not-seen-bulling etc. for fertility routines
- 2. Drying Off List:** Including SCC, mastitis events and predicted cure probability.
- 3. Foot Trimming List:** Including lame cows, rechecks and routine trims.

New Beech Farm - Fred Arnold Foot Trimming List - Table Report



Criteria: 01/03/2020 - 01/09/2021

Notes:

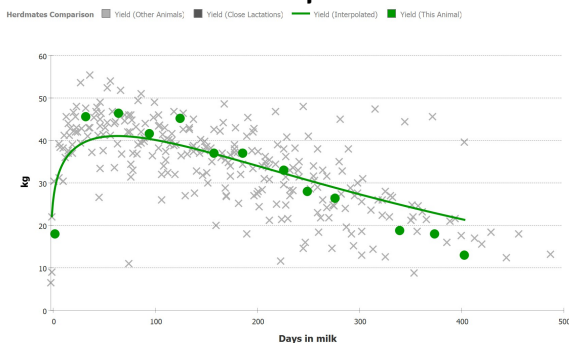
Code	Eartag	Parity	Days in Milk	Current Score	Previous Score	No. High Scores (Lifetime)	Current Lameness Status	No. Lameness Cases (Lifetime)	Limbs Affected (Lifetime)	Date of Last Lameness Event	Last Lameness Event Lesion	Due Date	PD Status	Estimated Dry Off Date
7 newly lame cows														
25	UK106665101738	1	Dry	3	1	1	LAME_NEW	0				26/11/2021	+	27/09/2021
80	UK106665601792	1	384	1	1	0	LAME_NEW	1	FL	02/06/2021		14/12/2021	+	15/10/2021
98	UK106665301810	1	195	3	1	1	LAME_NEW	0				02/04/2022	+	01/02/2022
99	UK106665401811	1	190	1	1	0	LAME_NEW	1	FR	10/06/2021	Foul	11/02/2022	+	13/12/2021
148	UK106665701856	1	74	3	1	1	LAME_NEW	0				-	-	-
758	UK106665201494	3	Dry	2	1	1	LAME_NEW	0				25/09/2021	+	27/07/2021
899	UK106665701611	3	200	2	1	1	LAME_NEW	0				04/02/2022	+	06/12/2021
4 cows due for routine														
65	UK106665501777	1	281	1	1	0	SOUND	0				04/12/2021	+	05/10/2021
76	UK106665201788	1	272	1	1	1	SOUND_RECOVERED	0				09/12/2021	+	10/10/2021
82	UK106665101794	1	272	1	1	0	LAME_RECURRENT	2	BR/FL	10/06/2021	Foul	10/02/2022	+	12/12/2021
94	UK106665601806	1	278	2	2	5	CHRONIC	0				19/10/2021	+	20/08/2021

Cow Record Card

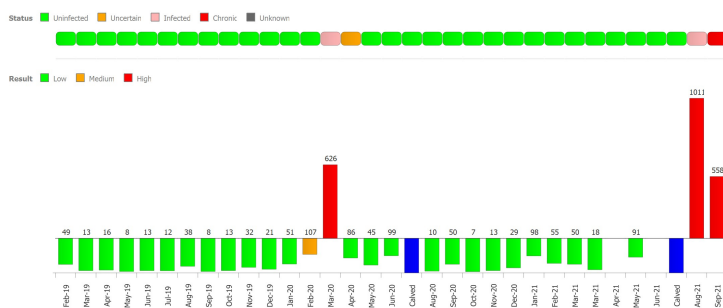
Search for individual animals and view cow data:

1. Events, treatments and movements
2. Genealogy – dam, sire, calf and half-siblings
3. Milk recording data
4. Production curves
5. Johne's test results
6. Genetic information
7. Data quality

Milk Yield Compared to Herdmates



Individual Cow SCC



Johne's Test Results

Animal Information: Ear Tag UK106665101591, Code 877, Lactation No. 3, Status Alive, EID 1, DOB 01/03/2017, Age (months) 54, John's status P.Positive, Group, Sex Cow, Rpt Group, Breed Holstein Friesian, Comment SMOOTH KATHRYN X

Animal Events | Treatments | Movements | Calves | Genealogy | Familial Risk | Recordings | **Johne's** | Milk Production | Genetics | Warnings

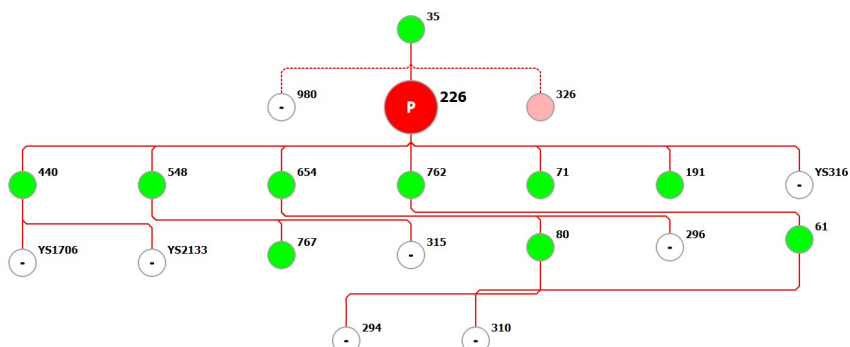
Chart Table

Dam Status: Status at Calving Unknown, Status End Lact C.Negative, Latest Status C.Negative

Johne's Results	Age in M.	DiM	Parity	Titer	Result	TTV.Status	J Status
Jun-19	27	68	1	2.65	Negative	C.Negative	J1
Sep-19	30	158	1	4.91	Negative	C.Negative	J0
Dec-19	33	248	1	3.40	Negative	C.Negative	J0
Mar-20	36	340	1	18.36	Negative	C.Negative	J0
Jun-20	39	4	2	102.71	Positive	P.Positive	J4
Sep-20	42	96	2	25.72	Uncertain	Uncertain	J3
Dec-20	45	187	2	21.13	Uncertain	Uncertain	J2
Mar-21	48	277	2	25.05	Uncertain	Uncertain	J0
Jun-21	51	374	2	45.35	Positive	P.Positive	J4

Familial Risk of Johne's Disease

Johne's TV ● Positive ● Provisionally Positive ● Uncertain ● Negative ● Unknown



TOTALVET - FAQs

How widely compatible is the software?

The software is compatible with a number of on-farm software including Sum-IT, UNIFORM-Agri, Interherd, GEA C21, Computing for Farming and Farm Wizard, with more being added all the time. It can also run using CDL data from Milk Recording Organisations.

The data I've imported doesn't contain any milk recording data – what can I do?

If populated from on farm data without milk records it is possible to 'merge' a cdl file thereby allowing access to milk records and analyses.

The imported data only contains milk records and basic fertility - what can I do?

The software has a facility to merge event data (*e.g.* mastitis, lameness, mobility and condition scores, Johne's, milk recording results) that has been collated separately. We have a number of spread sheet templates to facilitate additional data capture and integration – available at:

www.total-vet.co.uk

How do I update the software?

The software automatically updates over the internet so you can be confident that you will be kept up to date with any new releases.

Can I write reports in the software?

Yes - the software includes an inbuilt reporting and note keeping facility which will allow either short notes to be printed on associated graphs or as a stand-alone report. The software can store the report criteria when a note was written, for quick recall.

Can I restrict the analysis to different groups of cows?

The software allows a lot of flexibility in analysis using the 'Edit Criteria' function. Reports can be customised by days in milk, lactation number, breed, or group.

I have preset targets for one of my herds, is it possible to implement these in TotalVet?

The software allows you to change many parameters in the Configuration tab. In Fertility analysis, the expected dry period length, voluntary wait period, service to PD time and gestation length can all be customised. For herds achieving a high level of milk protein production, the protein intercept can be increased. Users can alter the lag period for defining a 'new case' of clinical mastitis and lameness (customised by lesion).

Do I have to be connected to the internet to use the software?

No - the software is designed to run in 'stand-alone' mode, but does need to connect to the internet at least every two weeks to check for updates and licenses.

How is the software supported?

Support is provided by a team of RCVS and European Recognised Specialists at QMMS. Datasets can be easily transferred out for assistance.

Key Facts

Affordable

Tiered pricing to reflect usage

Easy to Use

Consistent Analysis Across Different Data Sources and Farms

Powerful Summary Reports

Rapid Herd Evaluation

Innovative and Practical Analyses

Integrated Report Writer

Brandable to your Business

Automatic Updates

Developed and Supported

by RCVS and European Recognised Specialists

For Further Details - Contact

Quality Milk Management Services Ltd

Cedar Barn

Easton Hill

Easton

Wells

Somerset

BA5 1DU

United Kingdom

Tel: +44 (0)1749 871 171

email: totalvet@qmms.co.uk

Website: www.total-vet.co.uk



Quality Milk Management Services Ltd. Registered Office: Stoke House Stoke Street, Rodney Stoke, Cheddar, Somerset BS27 3UP.

Reg No. 5411451 VAT Reg No. 851 0569 33

Directors: Drs A J and K J Bradley MsRCVS