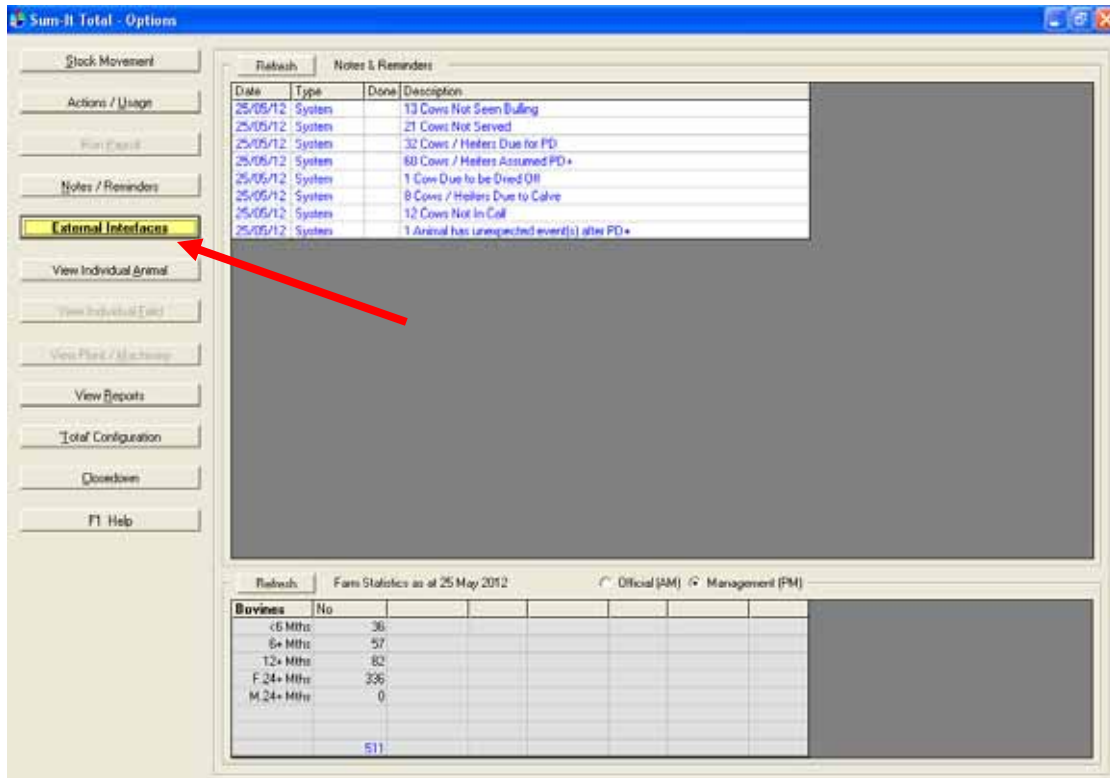


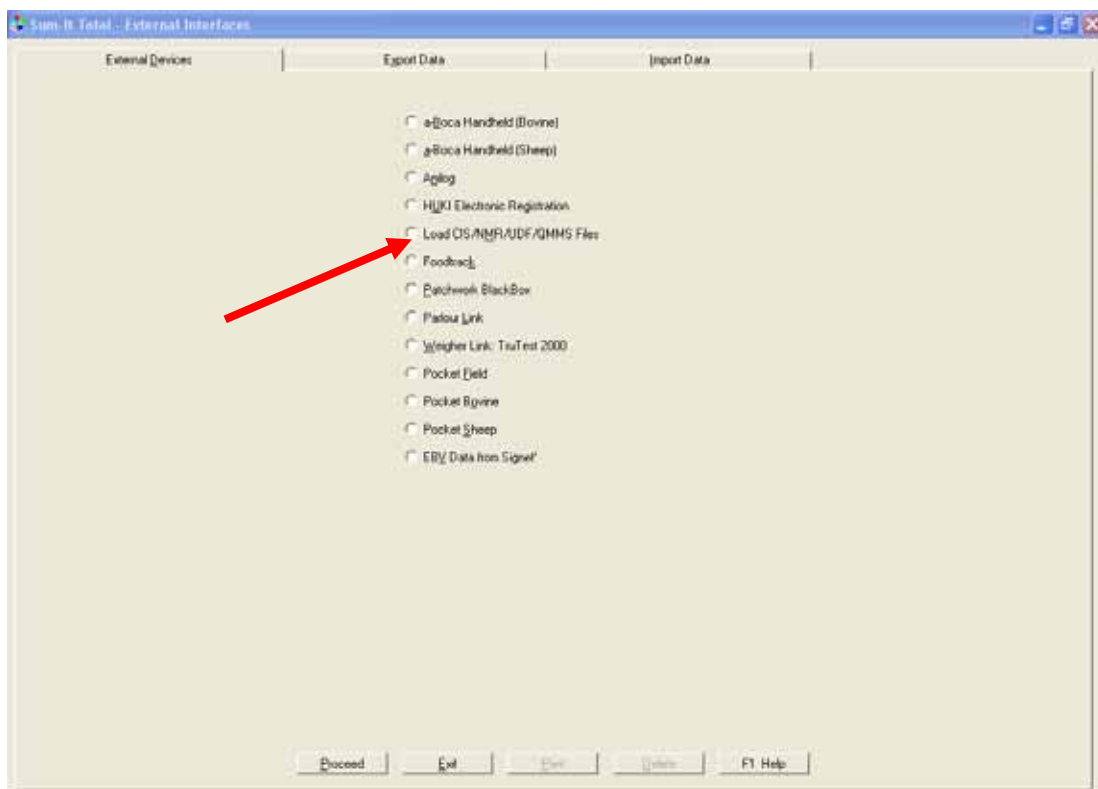
Importing Your Milk Recording Results into Total

- 1) Save the email attachment 'Results.csv' or 'QMMSResults.csv' to a convenient folder on your PC or to a USB stick
- 2) Launch Total

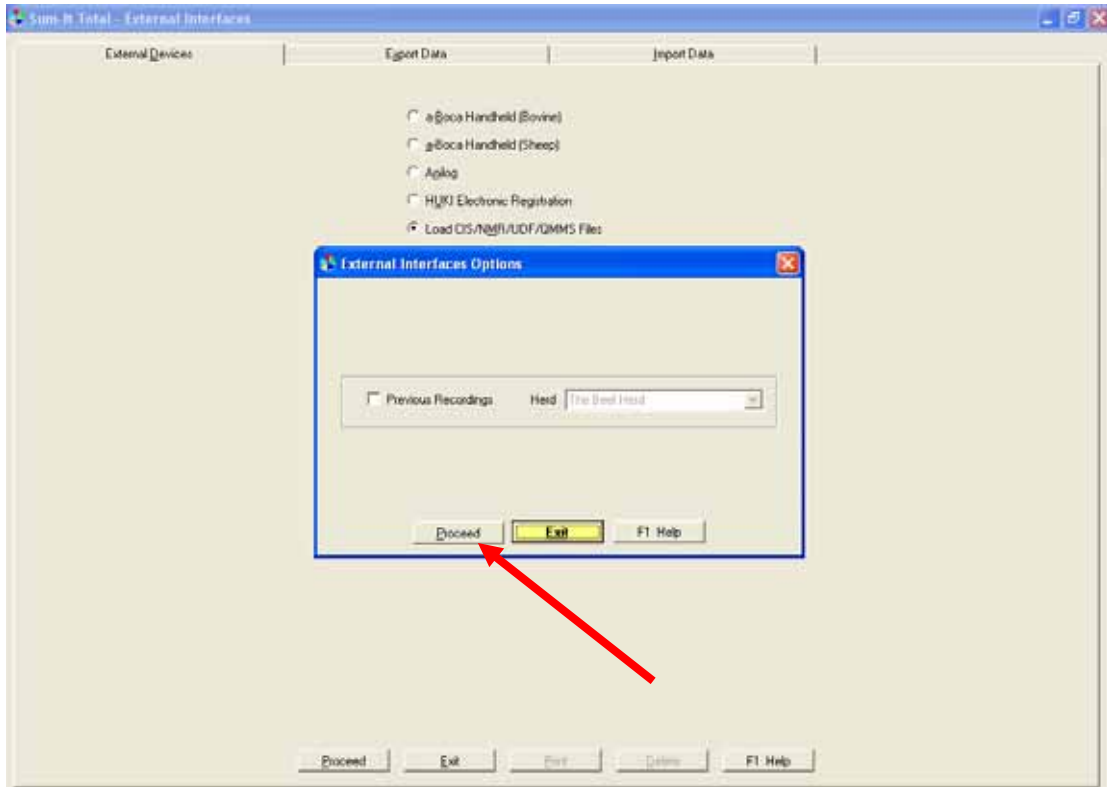
From the left hand menu select 'External Interfaces'



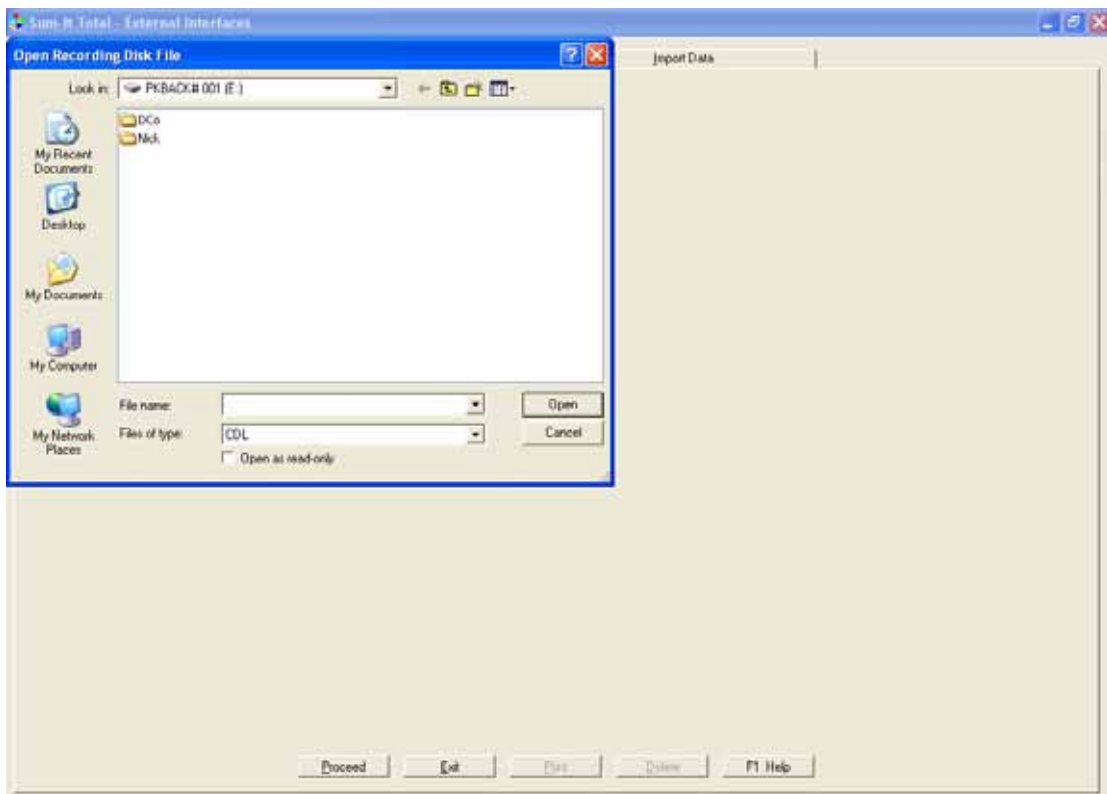
Select 'Load CIS/NMR/UDF/QMMS Files'



Select 'Proceed'



Either navigate to the folder where your results are stored and select the results file. If your results are on a USB stick they may import automatically at this point



Follow the on screen instructions through the next few steps and your results should be available to view in your software.