

In order to obtain meaningful diagnostic samples it is **ESSENTIAL** to follow a careful sampling technique. Failure to do so is likely to lead to either contaminated samples or results that may be misleading. If in doubt contact your veterinary surgeon or the number below for advice.

## Milk Sampling Technique

Wear a pair of **CLEAN DISPOSABLE GLOVES**

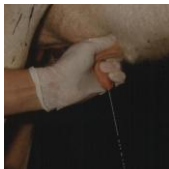
Wash excessively dirty teats with clean water and wipe dry with fresh paper towel



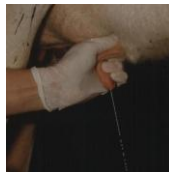
Disinfect the teat end by scrubbing with a surgical spirit swab, allow to dry



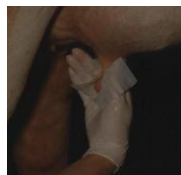
Discard 4-6 squirts of milk



Collect sample holding collection tube as horizontally as possible - only 2-3ml is required!



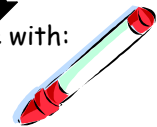
Discard **another** 4-6 squirts of milk



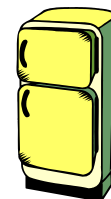
Thoroughly clean and disinfect the teat **AGAIN** by scrubbing with a surgical spirit swab, allow to dry



Label tube with:  
• cow i/d  
• quarter  
• date



**Immediately** store sample in **freezer**



Once samples have been collected, post the samples first class in the box provided, to the address below.

**PLEASE DO NOT POST ON A FRIDAY or SATURDAY**