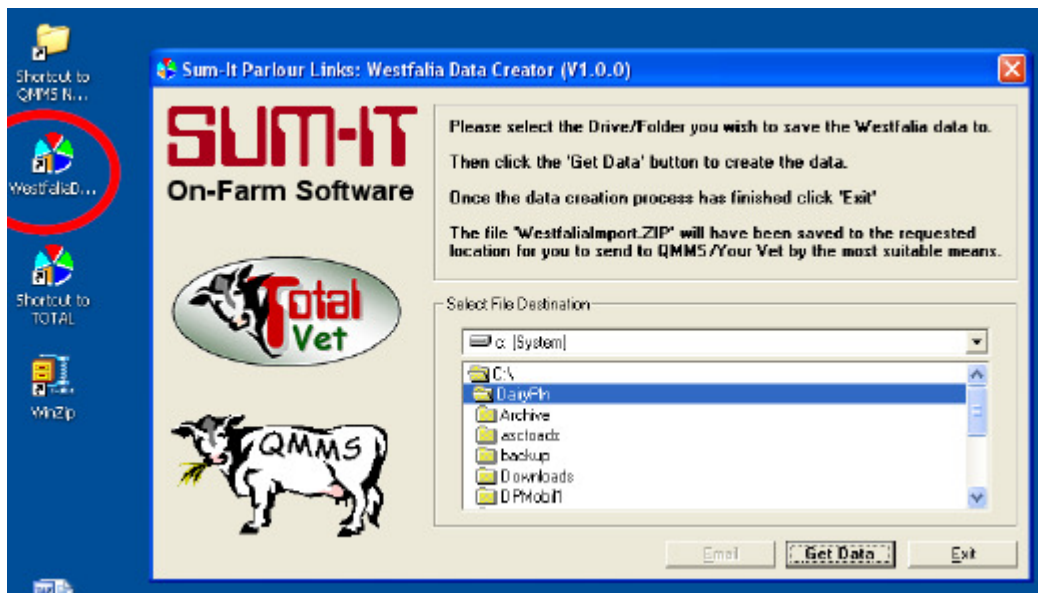


Sending your on-farm DairyPlan C21 (GEA) data to QMMS

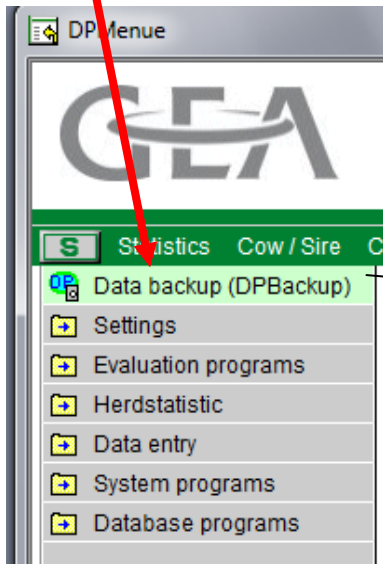
If you use DairyPlan C21 on-farm software there are two ways to send a back up of the data. Please remember to import your PREVIOUS milk recording data before you make and send the back up.

1. QMMS ARE ABLE TO PROVIDE CONVERTER SOFTWARE TO ALLOW A BACK UP OF THE C21 DATA TO BE TAKEN QUICKLY. OPEN THE SOFTWARE, CLICK 'GET DATA', SAVE TO DISK AND ATTACH TO AN EMAIL SEND TO milkrecording@qmms.co.uk



2. IF YOU DO NOT HAVE THE 'WESTFALIA DATA CREATOR' SOFTWARE, CLICK ON THE 'S' IN THE TOP LEFT-HAND CORNER AND SAVE THE DPBACK UP FILE TO A MEMORY STICK. EITHER PUT THIS MEMORY STICK IN AN EMPTY MILK SAMPLE POT (AND WE WILL RETURN IT IN YOUR NEXT BATCH OF BOXES) **OR** EMAIL THE BACK UP FILE TO milkrecording@qmms.co.uk **OR** UPLOAD TO OUR SECURE DATA SERVER

On the front screen of C21, click on the 'S' square in the top left-hand corner



Creates a zipped file backup file: save to disk and email to:

milkrecording@qmms.co.uk