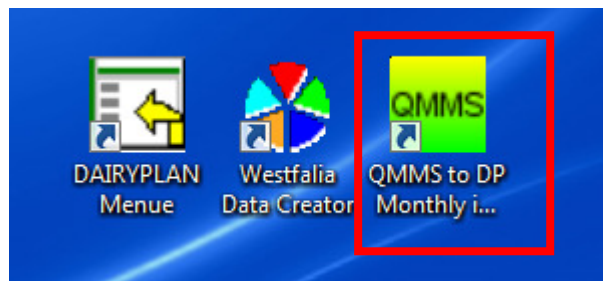


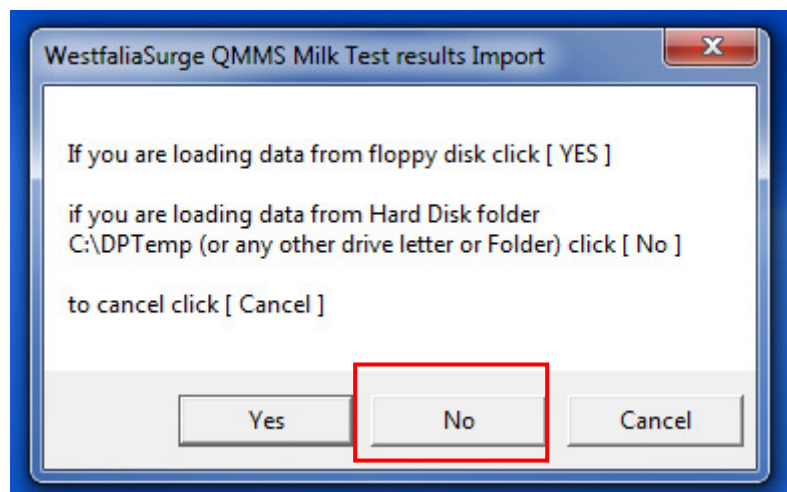
Importing QMMS milk recording results:

DairyPlan C21 software

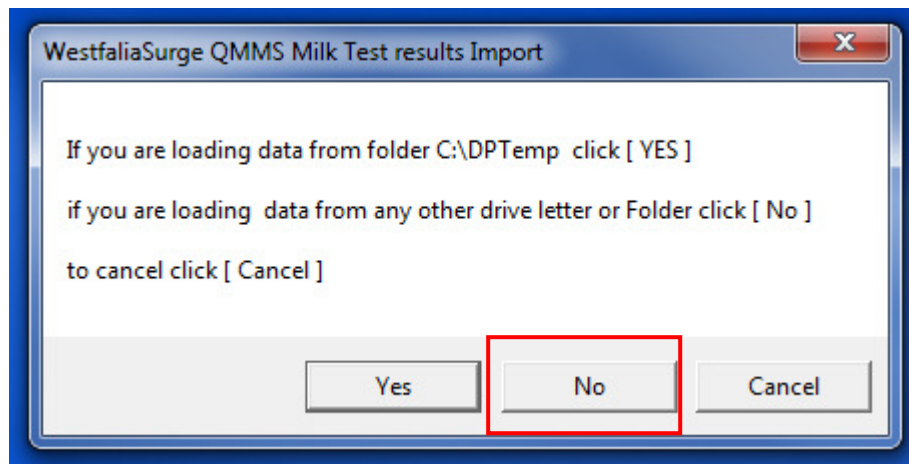
1. Save your 'Results.ads' file to a folder on your PC or on a memory stick from the email sent to you notifying you of your results
2. Double-click on the 'QMMS to DairyPlan Monthly Import' icon on your desktop (this software should have been emailed to you when you began milk recording with QMMS)



3. Click 'OK' and follow the on screen instructions, selecting 'No' (you are not loading data from floppy disk)



4. Select 'No' again (not loading data from drive C:\DPTemp)



5. Navigate to the 'Results.ads' file using the browsing window that opens and click 'OK' to import the data